



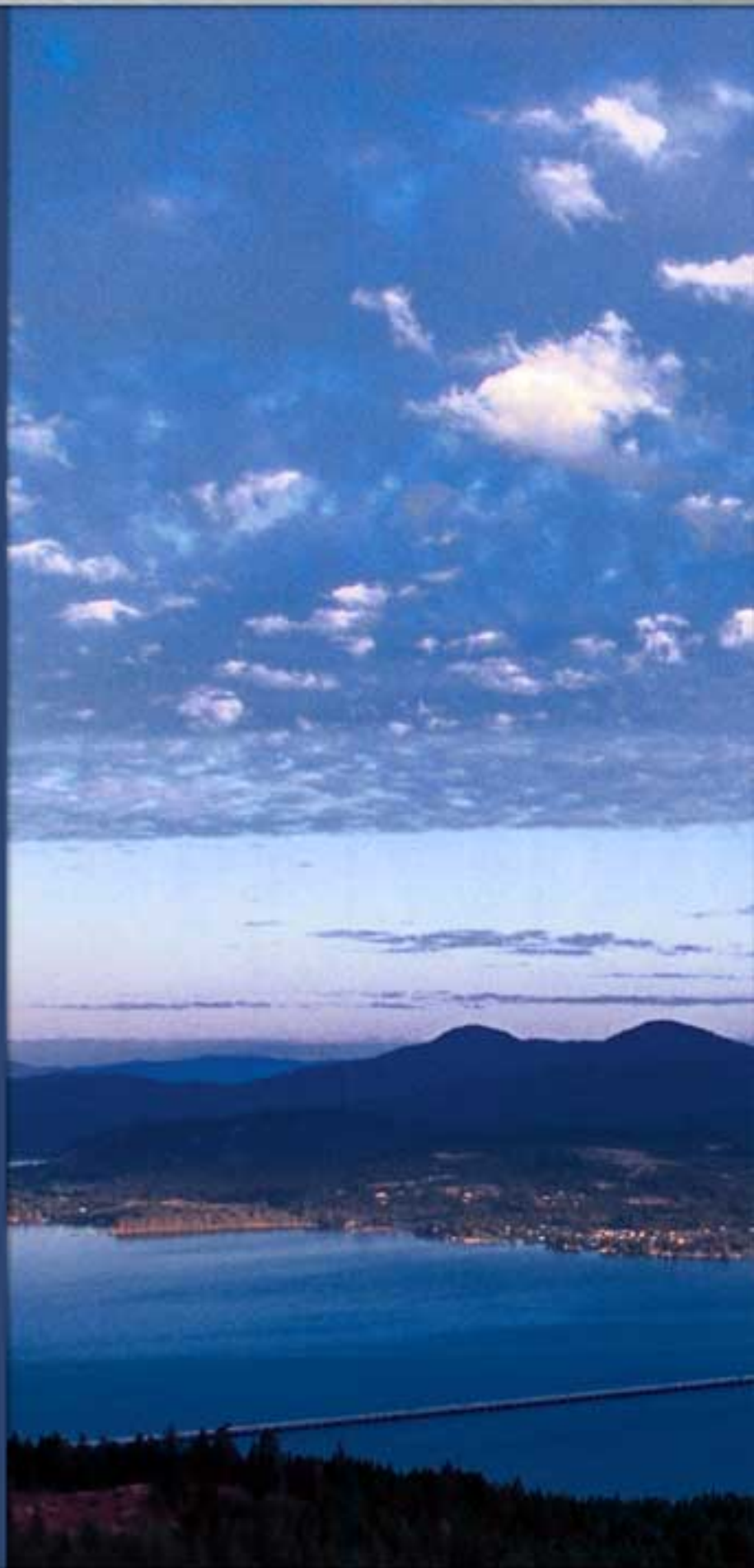
SILVERWING
AT SANDPOINT



SilverWing Attributes

When people arrive in Sandpoint, Idaho, they know they have found a special spot. Situated in northern Idaho just south of Canada, Sandpoint is ideally located on the northern tip of one of the West's largest lakes, surrounded by rugged, beautiful mountains. The possibilities for outdoor recreation are limitless. Aviators can access the great outdoors through remote airstrips in the area and float plane pilots have access to numerous remote lake opportunities.

Imagine landing your plane and within minutes being able to taxi to your hangar and merely head upstairs to your residence with anywhere between 2,100 to 4,300 square feet to relax and admire the tremendous views of Sandpoint. Each of our custom-designed models affords you that luxury. We offer a variety of colors, textures and architectural elements to choose from for these models and each is designed with an upscale mountain home feel blending into the serenity of the surrounding environment.





SilverWing at Sandpoint - Our Vision Is Born

Whether you are flying in for your first or your thousandth trip to Sandpoint, the incredible beauty as you descend over the water with downtown Sandpoint off the left nose of your plane is breathtaking. After landing and spending time visiting all the incredible areas this place has to offer, from the small town ambience to the incredible untouched surrounding wilderness and remote back country airstrips, we knew this was the place to build our aviation dream. With those thoughts in mind we had one mission, to build the best and most unique fly-in community with the highest commitment to detail ever put forth towards an aviation development. This place was simply too precious to create anything less.

Today we are incredibly pleased to offer to the aviation world our dream, SilverWing at Sandpoint. SilverWing at Sandpoint was created by Aviators for Aviators and people who love the incredible world of flight. The SilverWing at Sandpoint community covers approximately 18 acres with direct access to the Sandpoint Airport. The development is comprised of 44 custom hangars ("fly-in units"), seven types of custom-designed models, and over 10,000 square feet of community common areas that include a recreation center, pool, spa and exercise room. Each of our fly-in units contains a hangar on the ground floor and an unfinished loft space above ready for specific owner build out. This project allows users to unique opportunity to purchase these fly-in units on fee simple land, which means you own both the structure and the land underneath.



SILVERWING AT SANDPOINT

SILVERWING ROAD

BBQ & PARTY
POOL & SPA
EXERCISE & SHOWERS

PARKING

FBO HANGAR

FBO PHASE II

EXISTING QUEST HANGAR

FUEL AREA

GATE

GATE

SPITFIRE STREET

TRANSIENT RAMP

GATE

CORSAIR STREET

PARKING

GATE

MUSTANG STREET

TAXIWAY

RUNWAY

HELLCAT STREET





SILVER WING AT SANDPOINT

1100 AIRPORT WAY, SANDPOINT, IDAHO 83864 • (866) 773-2366
www.silverwingatsandpoint.com • info@silverwingatsandpoint.com

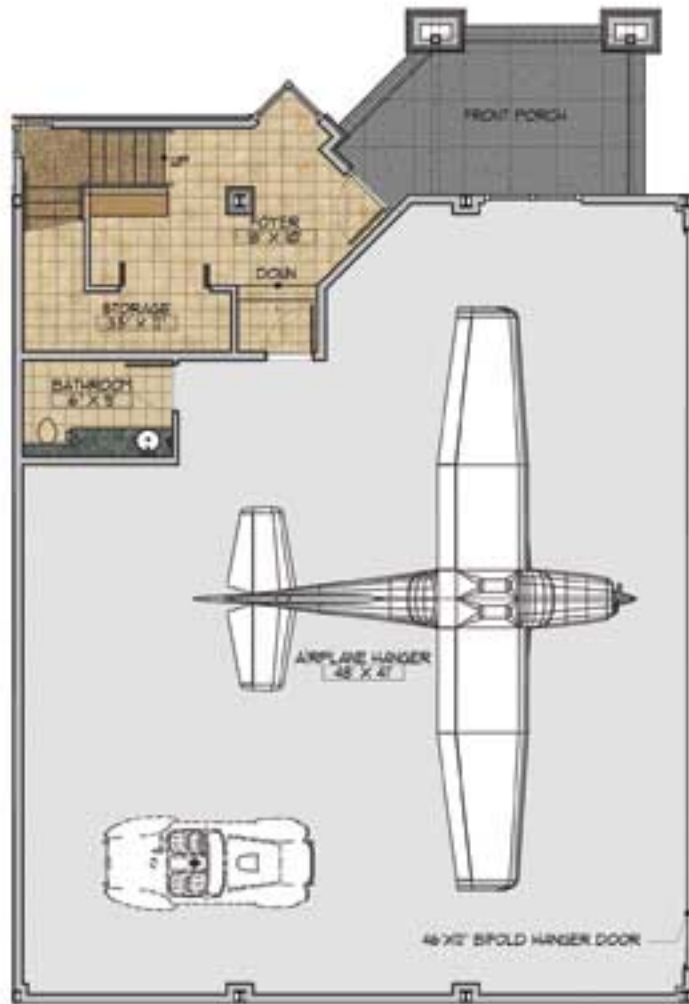


50 X 42 PROTOTYPE:
EXTERIOR RENDERING



SILVER WING AT SANDPOINT

1100 AIRPORT WAY, SANDPOINT, IDAHO 83864 • (866) 773-2366
www.silverwingatsandpoint.com • info@silverwingatsandpoint.com



50 X 42 PROTOTYPE:
FLOORPLAN - LEVEL ONE



50 X 42 PROTOTYPE:
FLOORPLAN - LEVEL TWO



SILVER WING AT SANDPOINT

1100 AIRPORT WAY, SANDPOINT, IDAHO 83864 • (866) 773-2366
www.silverwingatsandpoint.com • info@silverwingatsandpoint.com

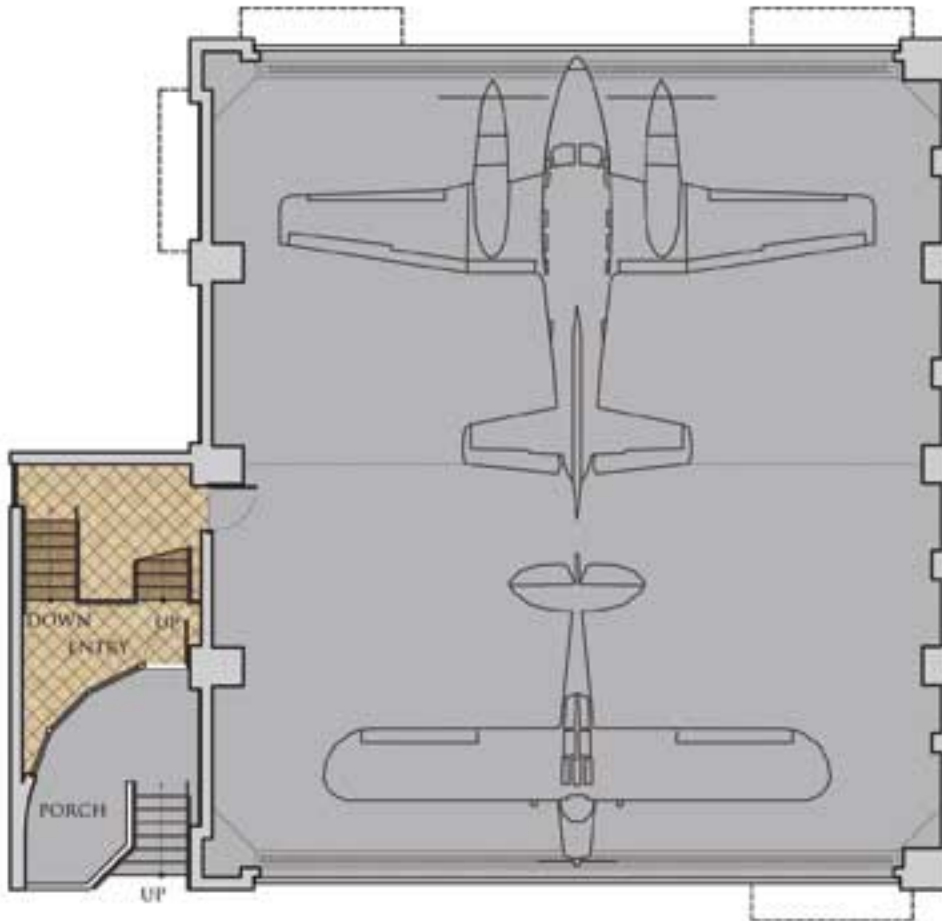


50 X 56 PROTOTYPE:
EXTERIOR RENDERING



SILVER WING AT SANDPOINT

1100 AIRPORT WAY, SANDPOINT, IDAHO 83864 • (866) 773-2366
www.silverwingatsandpoint.com • info@silverwingatsandpoint.com



50 X 56 PROTOTYPE:
FLOORPLAN - LEVEL ONE



50 X 56 PROTOTYPE:
FLOORPLAN - LEVEL TWO



SILVER WING AT SANDPOINT

1100 AIRPORT WAY, SANDPOINT, IDAHO 83864 • (866) 773-2366
www.silverwingatsandpoint.com • info@silverwingatsandpoint.com

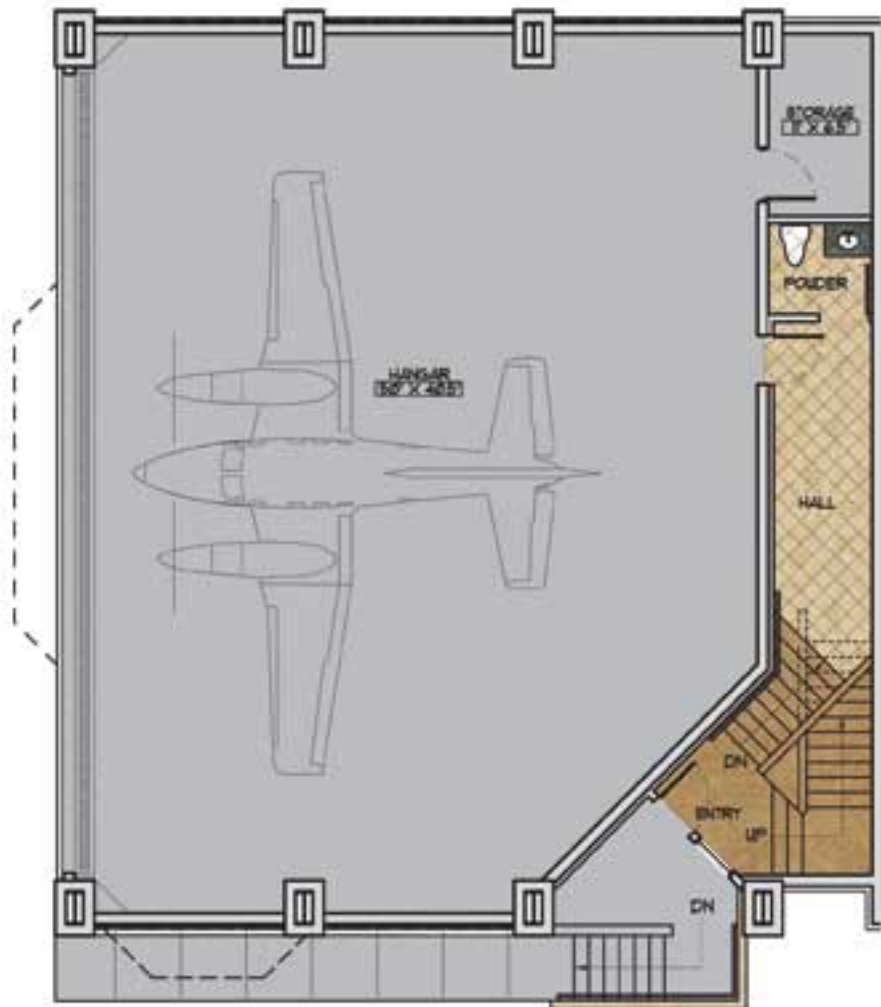


55 X 50 PROTOTYPE:
EXTERIOR RENDERING



SILVER WING AT SANDPOINT

1100 AIRPORT WAY, SANDPOINT, IDAHO 83864 • (866) 773-2366
www.silverwingatsandpoint.com • info@silverwingatsandpoint.com



55 X 50 PROTOTYPE:
FLOORPLAN - LEVEL ONE



55 X 50 PROTOTYPE:
FLOORPLAN - LEVEL TWO



SILVER WING AT SANDPOINT

1100 AIRPORT WAY, SANDPOINT, IDAHO 83864 • (866) 773-2366
www.silverwingatsandpoint.com • info@silverwingatsandpoint.com

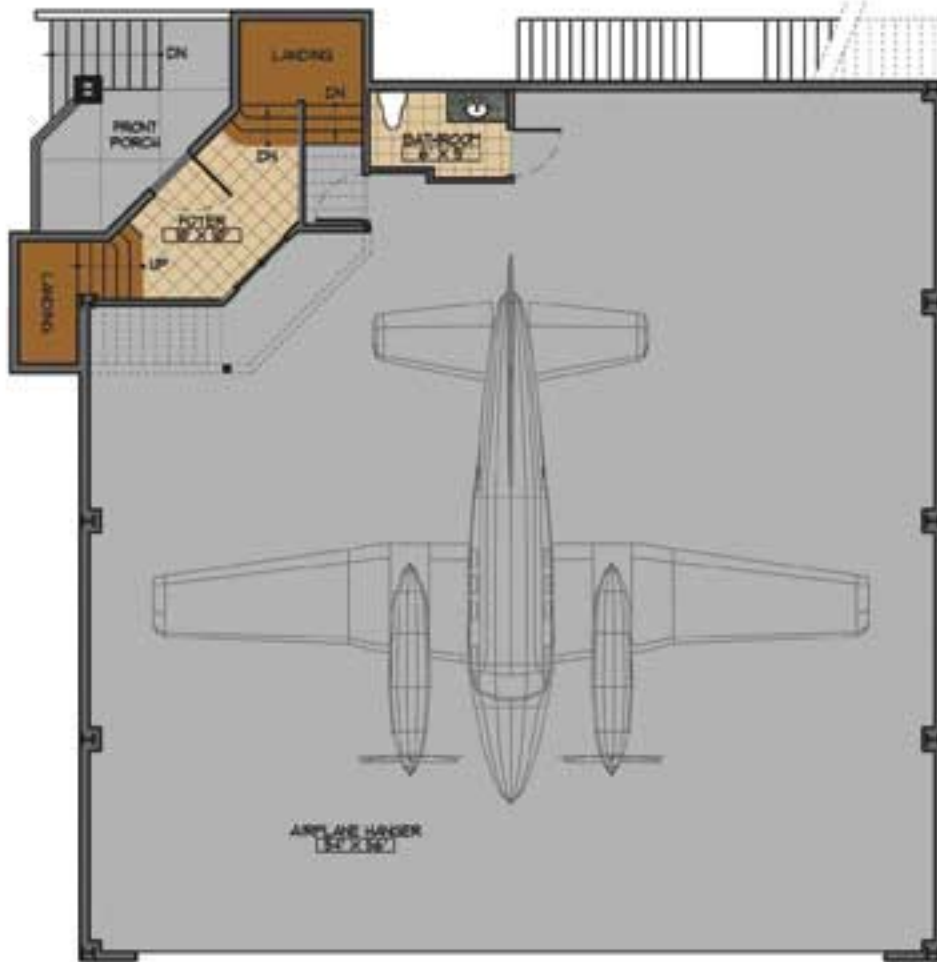


55 X 56 PROTOTYPE:
EXTERIOR RENDERING



SILVER WING AT SANDPOINT

1100 AIRPORT WAY, SANDPOINT, IDAHO 83864 • (866) 773-2366
www.silverwingatsandpoint.com • info@silverwingatsandpoint.com



55 X 56 PROTOTYPE:
FLOORPLAN - LEVEL ONE



55 X 56 PROTOTYPE:
FLOORPLAN - LEVEL TWO



SILVER WING AT SANDPOINT

1100 AIRPORT WAY, SANDPOINT, IDAHO 83864 • (866) 773-2366
www.silverwingatsandpoint.com • info@silverwingatsandpoint.com

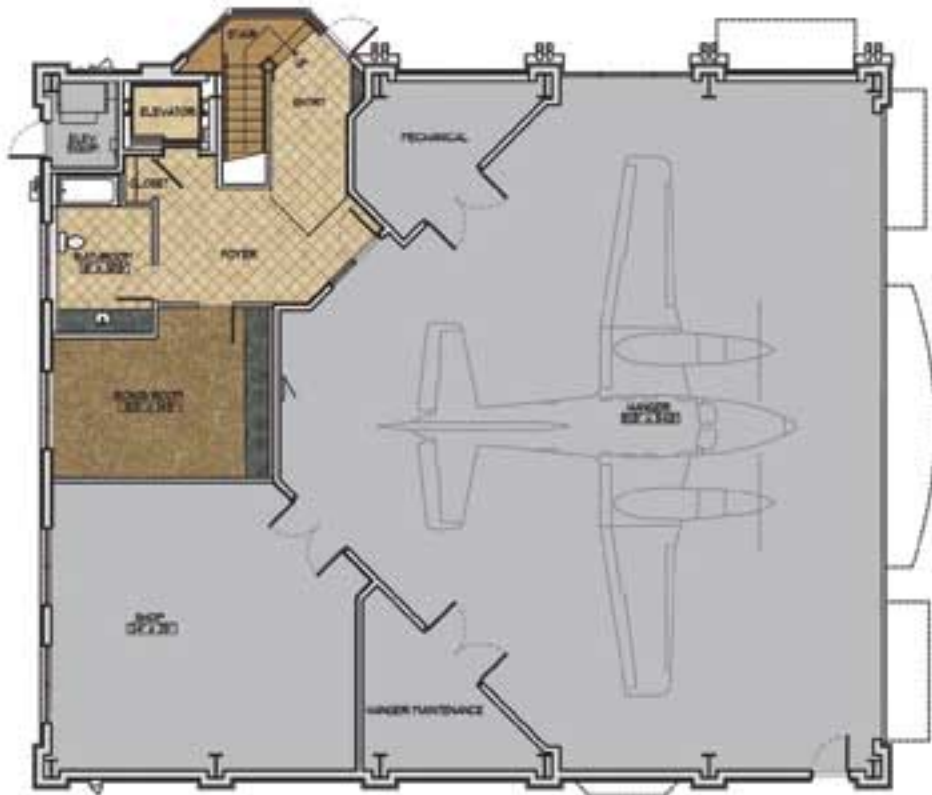


60 X 70 PROTOTYPE:
EXTERIOR RENDERING



SILVER WING AT SANDPOINT

1100 AIRPORT WAY, SANDPOINT, IDAHO 83864 • (866) 773-2366
www.silverwingatsandpoint.com • info@silverwingatsandpoint.com



60 X 70 PROTOTYPE:
FLOORPLAN - LEVEL ONE



60 X 70 PROTOTYPE:
FLOORPLAN - LEVEL TWO

CANADA



WASHINGTON

OREGON

WYOMING

LA GRANDE

WALLA WALLA
PULLMAN
MOSCOW
SPOKANE

NEVADA

UTAH



IDAHO



TO BONNERS FERRY & CANADA

SCHWEITZER MOUNTAIN

95

200

KOOTENAI

PONDERAY

SUNNYSIDE

200

TO PRIEST RIVER

SANDPOINT

2

DOVER

HOPE

200

BROTEN

GAMBELL LAKE

95

SAGLE

ALGOMA

SHEPHERD LAKE

GARFIELD BAY

MIRROR LAKE

ROUND LAKE STATE PARK

WESTMOND

TALACHE

CLARK FORK

200

TO MISSOULA, MONTANA

95

COCOLALLA LAKE

GREEN MOUNTAIN MOUNTAINS

GRANITE

LAKE PEND OREILLE

CAREYWOOD

95

TO COEUR D'ALENE

BAYVIEW

FARRAGUT STATE PARK

LAKEVIEW

54

NORTHWEST TO
SCHWEITZER
MOUNTAIN RESORT
(9 MILES)

95 NORTH TO
CANADA
(45 MILES)

EAST TO
CLARK FORK
(24 MILES)



95

2

PONDERAY

200

SANDPOINT
MUNICIPAL
AIRPORT

SANDPOINT ELKS
GOLF COURSE

MOUNTAIN VIEW DR

BALDY MOUNTAIN RD

LAKE
PEND
OREILLE

SANDPOINT

SAND
CREEK

GREAT NORTHERN RD

FIFTH AVE

CEDAR
STREET
BRIDGE

CEDAR ST

CITY
BEACH

PINE ST

200

2

CHUCK
SLOUGH

SYRINGA HEIGHTS RD

95

WEST TO
SPOKANE
(70 MILES)

200

2

**GREATER
SANDPOINT**

PEND
OREILLE
RIVER

SOUTH TO
COEUR D'ALENE
(46 MILES)

95



SILVERWING
AT SANDPOINT



SILVERWING AT SANDPOINT, LLC
1100 AIRPORT WAY
SANDPOINT, IDAHO
(866) 773-2366

www.silverwingatsandpoint.com
info@silverwingatsandpoint.com